

LPKF ProtoFlow S und ProtoFlow S/N2 Reflow Ovens for Lead-Free Soldering

Product:	LPKF ProtoFlow S	LPKF ProtoFlow S/N2
Part no.:	126978	126977
Ordering info:	See front sleeve	



The compact convection oven LPKF ProtoFlow S is perfect for lead-free, RoHS compliant reflow soldering. The large motorized drawer automatically opens for cooling the PCB. The special MultiZone function allows the soldering process to be broken down into five separate phases, each featuring its own temperature profile. Three internal temperature sensors ensure even and precisely controlled heat distribution across the entire PCB surface. The LPKF ProtoFlow S also cures adhesives and conductive polymers.

The LPKF ProtoFlow convinces in SMD reflow soldering, curing conductive through-plating paste and other thermal processes requiring accurate control. The LPKF ProtoFlow S/N2 with controlled inert gas function (nitrogen) significantly reduces oxidation during the soldering process, optimizing the soldered connections.

- RoHS compliant lead-free reflow soldering
- Simple menu navigation via LCD display and arrow keys
- Preprogrammed and custom reflow profiles
- Process control and analysis via USB port
- Motorized drawer for automatic cool-off after soldering
- Model with program-controlled inert gas supply to reduce oxidation
- Additional temperature sensors optional

Ease-of-use and powerful

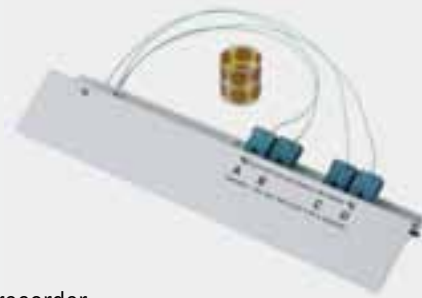
All parameters such as temperature, processing time and cool-off can easily be set with the arrow keys and LCD display. The attuned parameters can be stored as custom profiles.



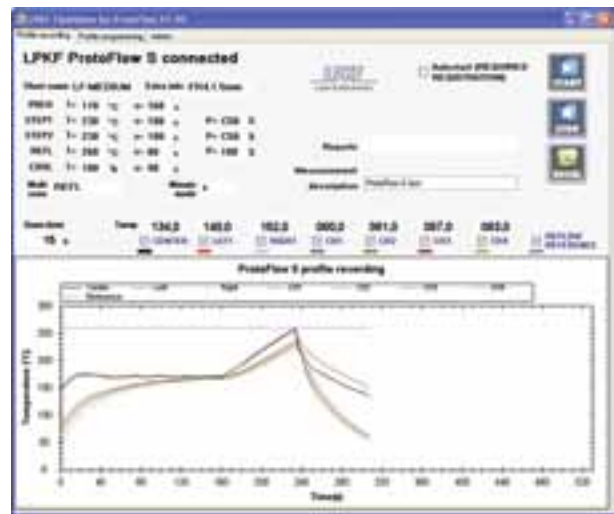
The lighted process chamber and a front window allow a visual inspection of the reflow process. USB connectivity and included system software LPKF FlowShow allow it to be controlled via PC. It can save profiles and record temperature profiles in real time – even data from the four (optional) temperature sensors which can be placed anywhere.



Options



Profile recorder
(Part no. 117850)



LPKF FlowShow

Technical Specifications:	LPKF ProtoFlow S	LPKF ProtoFlow S/N2
Part no.	126978	126977
Max. PCB size	230 mm x 305 mm (9" x 12")	
Max. preheat temperature/time	220 °C (428 °F), 999 s	
Max. reflow temperature/time	320 °C (608 °F), 600 s	
Long thermal treatment: temperature/time	220 °C (428 °F), 64 h	
Temperature stabilizing time	<5 min	
PCB cooling	Two fans, adjustable speed, mounted on base	
Power supply	230 V, 50 – 60 Hz, single-phase	
Max. power consumption	3.2 kW	
Dimensions (W x H x D)	647 mm x 315 mm x 450 mm (25.5" x 12.4" x 17.7")	
Weight	22 kg (48.5 lbs)	
Operating conditions	Temperature: 15 – 30 °C (59 – 95 °F) Humidity: 30 – 80 %	
Nitrogen pressure	–	7 bar (101.5 psi)
Nitrogen flow rate	–	200 – 500 l/h (0.12 – 0.29 cfm)

Technical Specifications subject to change.