

**Test
CircuitCAM for 30 days
with no obligation** download
PCB-Version from
www.lpkfusa.com

LPKF CircuitCAM 6.1

The New Software Interface for Your CAD / EDA System

- **Higher speeds - greater efficiency**
 - 50 percent faster computing time
 - Optimized paths - 20 percent shorter routing times
- **New look - easy to follow and user friendly**

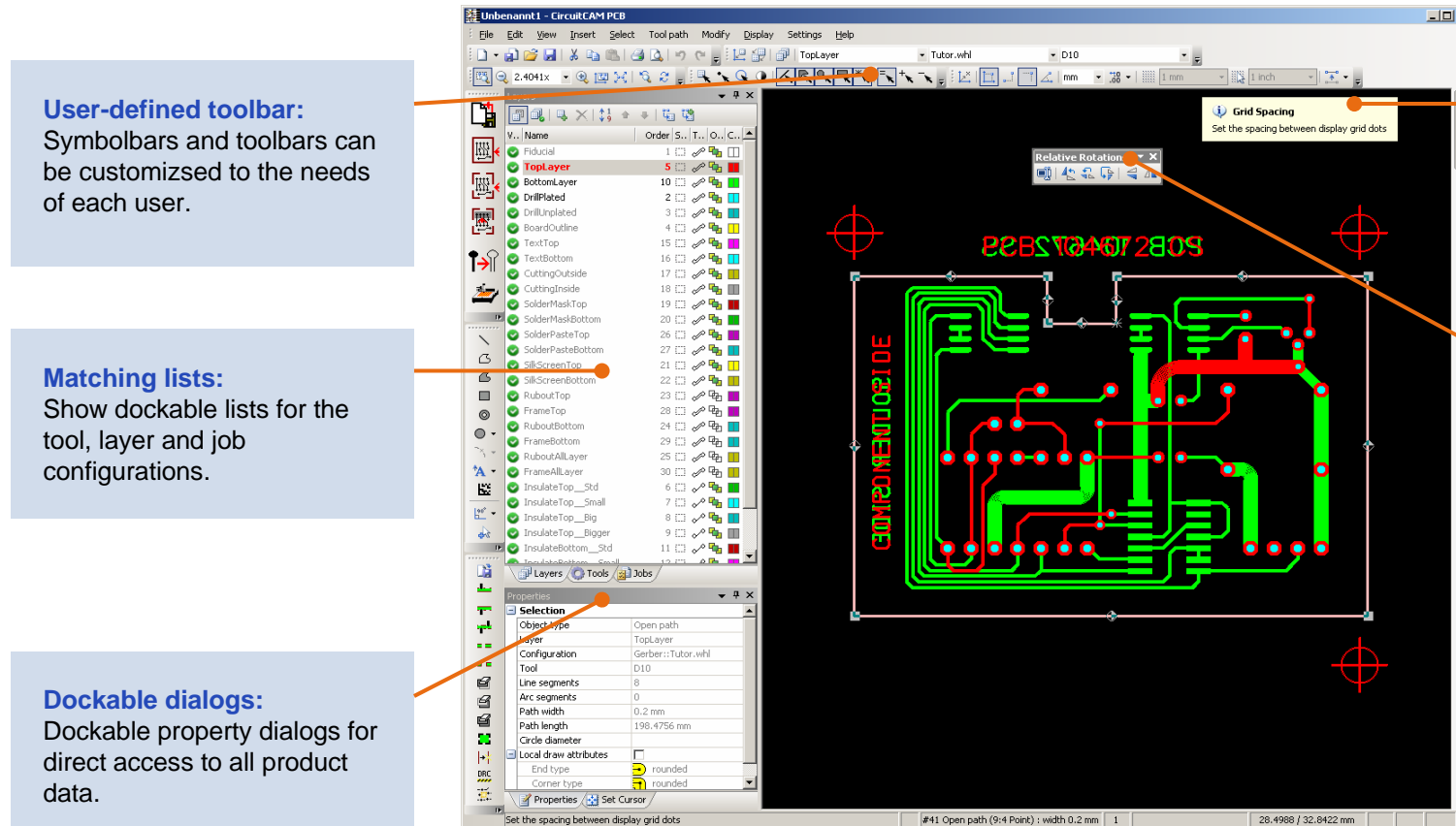
CircuitCAM 6.1 does everything faster and more efficiently: from data importing of CAD programs, to calculating production data, and controlling the circuit board plotter.

Windows
XP & Vista

LPKF CircuitCAM 6.1 – Productivity Counts

Short learning curves - fast results:

CircuitCAM 6.1 makes life even easier for users: the enhanced program interface boosts user friendliness further: Thanks to the intuitive user interface, draft layouts for PCBs can be modified even easier than before. Create a more functional CircuitCAM workstation - to precisely satisfy your needs!



User-defined toolbar:
Symbolbars and toolbars can be customized to the needs of each user.

Matching lists:
Show dockable lists for the tool, layer and job configurations.

Dockable dialogs:
Dockable property dialogs for direct access to all product data.

Tool tips:
Small windows in the graphic user interface simplify user orientation, and help identify functions.

Toolbar
for rotating and mirroring

Other functions

- Simple zooming via mouse wheel
- Invert selections

Precise preparation: The new import dialog

Get results faster: CircuitCAM 6.1 reduces the number of working steps in the new import dialog. Visualizing all the layers prior to import not only speeds up the preparation phase, it also increases transparency and flexibility.

Complete data overview:

The comprehensive file list in the import dialog simplifies the assignment of file layers.

Open layout view:

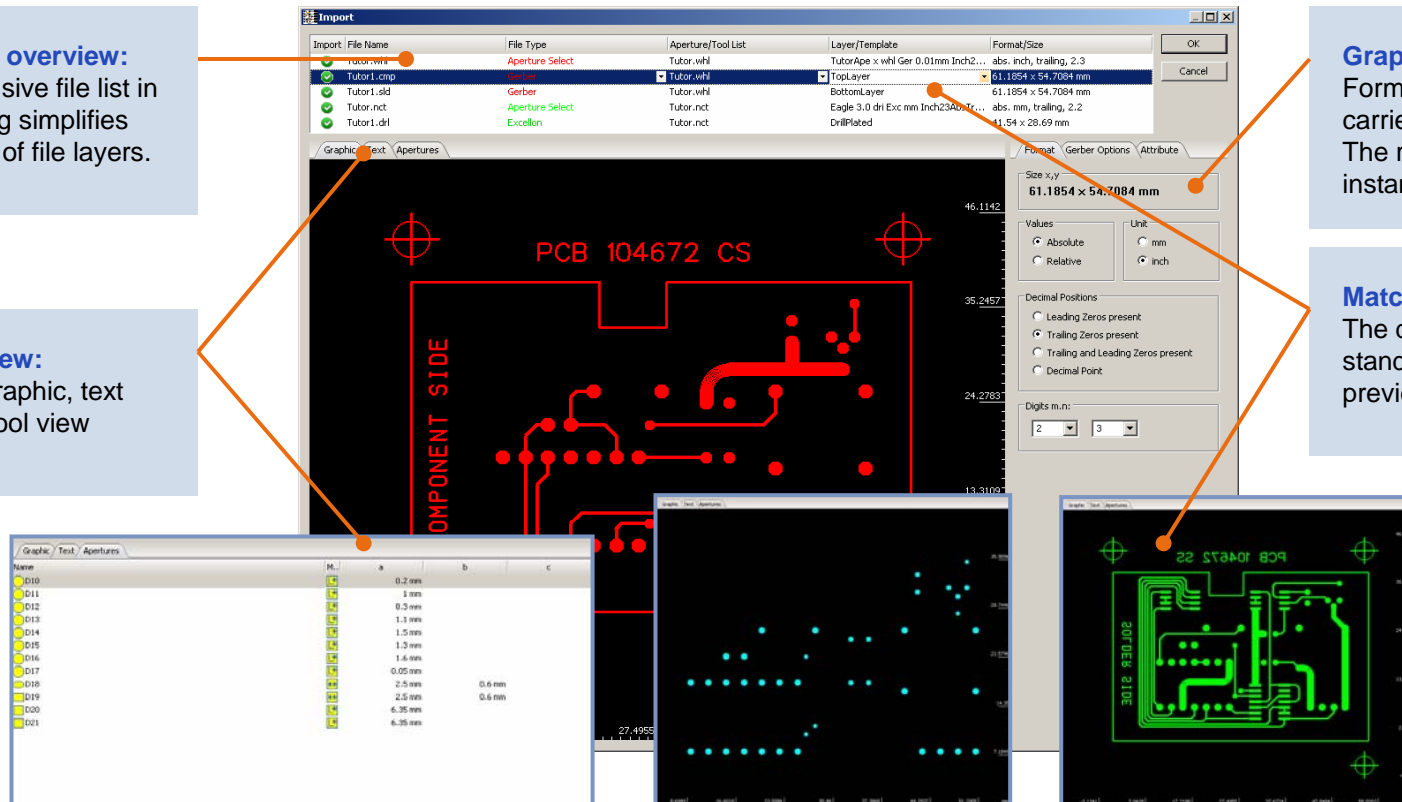
Rapid control graphic, text and apertures tool view

Graphic preview:

Format corrections can be carried out prior to import. The result is displayed instantly in the preview zone

Matching colors:

The data are shown in standard colors in the preview and in the program.

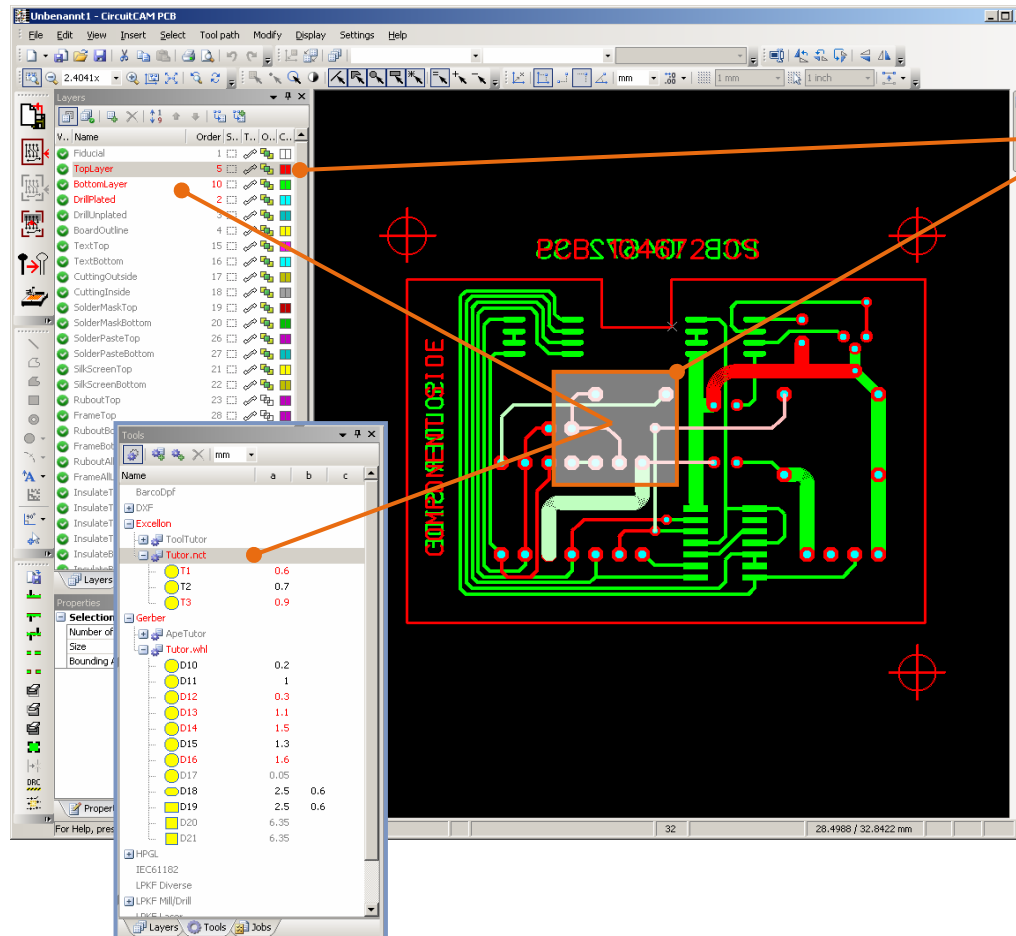
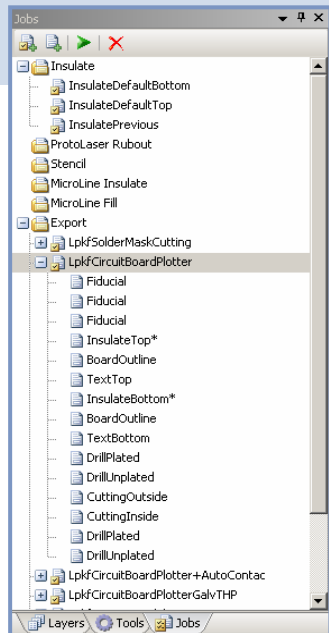


Clear color coding

Enhances legibility – ensuring fast and safe progress. When multiple objects are selected CircuitCAM highlights the layers and tools involved.

Everything at a glance:

The job list view speeds up access to job configurations.



Seeing what you are doing:

CircuitCAM also highlights all of the layers involved with the marked items in the list window.

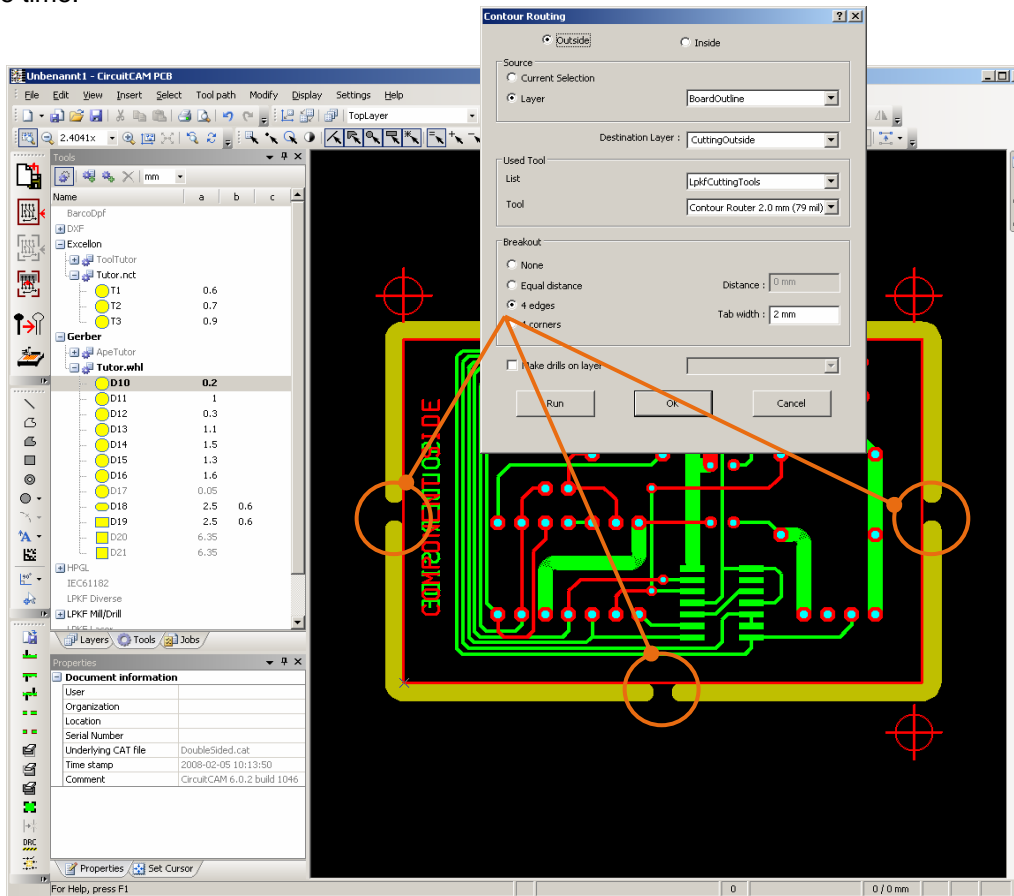
Identical colors ensure identification of the tools and items within the relevant layers.

New functions

- The layer being worked on is always in view
- Several layers can be selected at the same time
- Mask out layers
- Fast shifting between separate layers
- Move items between layers with a click of the mouse

Automatic contour routing:

The innovative Contour Routing function determines the optimal route for PCB depaneling. If required, CircuitCAM can automatically include break-out tabs at the edges or corners of the PCB. This reduces the manual input and saves valuable time.



Contact and more information:

LPKF Laser & Electronics
12555 SW Leveton Dr.
Tualatin, OR 97062
USA

info@lpkfusa.com
www.lpkfusa.com

Specification LPKF CircuitCAM 6.1

Variant	LPKFCircuitCAM Lite	LPKF CircuitCAM PCB
Import formats	Gerber Standard (RS-247-D), Gerber Extended (RS-247-X), Excellon, Sieb&Meyer, HPGL	Gerber Standard (RS-247-D), Gerber Extended (RS-247-X), Excellon, Sieb&Meyer, HPGL, Barco DPF, DXF, ODB++
Supported shapes	Circle, square, rectangle, rounded rectangle, bevelled rectangle, oblong, octagon, marker, IEC 61182 (1000-1030) including thermal reliefs, fiducials etc., special (arbitray definable).	
Export formats	LPKFMillDrill for LPKF BoardMaster (LMD)	LPKFMillDrill for LPKF BoardMaster (LMD), Gerber Standard (RS-247-D), Gerber Extended (RS-247-X), Excellon, HPGL, DXF
Editing functions	Move, duplicate, rotate (any angle), mirror, delete, extend/sever lines, expand/shrink lines, parallel shifting lines/segments, line/path conversion to polygon (filled), polygon conversion to line/path (outline), close/link open paths	
Special functions	Contour routing path generator with breakout tabs, programmable hot keys	Contour routing path generator with breakout tabs, volume operations, joining/separating objects, Draw to Flash, Step & Repeat (multiple PCB), polygon cut-out, groundplane generation with defined clearance, batch functions, programmable hot keys
Display functions	Zoom window (freely defineable), zoom in/out (mouse wheel/keyboard), overview, redraw, individual layers selectable/visible, panning (keyboard), layer objects insolid/outline/center line display, 16 pre-set colors (up to 16 million available) different color for pads and track of the same layer, individual colors for different insulation tools	
Selection functions	Single object, groups of objects, objects by layer, objects by tool, all objects, objects by type: line, rectangle, circle, polygon, flash (multiple choice and restriction to specific layer possible), invert selection.	
Graphic functions	Create line, open/closed path, polygon, rectangle, circle, pad/hole (flash), text (TTF and TTC)	Create line, open/closed path, polygon, rectangle, circle, pad/hole (flash), text (TTF and TTC), data matrix code
Control functions	Measuring	Measuring, design rule check
Insulation methods	Single/multiple insulation method, additional multiple insulation of pads, removal of residual copper spikes, milling out of large insulation areas (rub-out), concentrics or serpentes maintaining min. insulation spaces, zone insulation (PCB only)	
Insulation tools	1-2 tools	1-4 tools
Languages	English, German, French, Spanish	
Hardware and software requirements	Microsoft Windows 2000/XP/Vista, P4-processor or better, min. 512 MB RAM, screen resolution min 1024x768 pixel or better.	