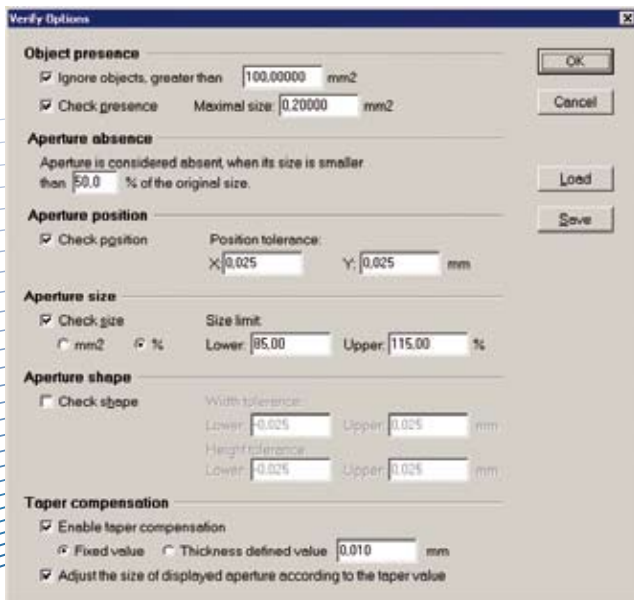


# Affordable Inspection of SMT Solder Paste Stencils LPKF StencilCheck Software



# Reports and Records of Stencils Made Easy

Solder paste application contributes significantly to the quality of a finished board; any effort to improve the quality is appealing. Wear effects on aperture geometries, or residue of solder paste in apertures after stencil cleaning, should be detected before misprints occur. The LPKF StencilCheck software tool compares the target values for aperture geometries with the vectorized data from a stencil scan. This helps to make sure that all stencil apertures are ready for the next print run.



LPKF StencilCheck offers numerous individually adjustable parameters e.g. for aperture size, aperture shape and position.

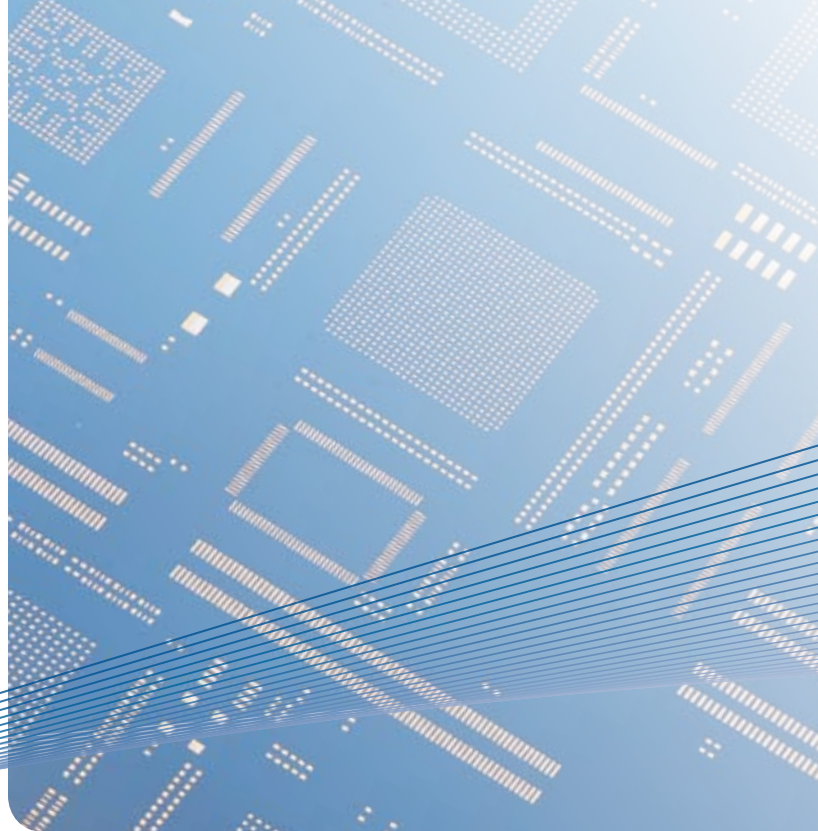
## LPKF StencilCheck for Stencil Manufacturers

Stencil manufacturers can easily submit quality reports to their clients; strengthening customer loyalty. LPKF StencilCheck works with all common third party scanners. Individual quality certificates can be generated cost efficiently. LPKF StencilCheck helps to meet the industry's growing demand for complete traceability of product quality. An optional CPK module expands the capability of LPKF StencilCheck to include statistical analysis.

## LPKF StencilCheck for Electronic Manufacturing Services (EMS)

With LPKF StencilCheck, wear and tear effects resulting from thousands of squeegee movements causing mechanical stress on the stencil can be detected early. Thus, unsatisfactory print quality can be avoided and at the same time costs for materials, components and ineffective production time can be saved. After cleaning takes place LPKF StencilCheck verifies that all of the stencil's apertures are free of solder paste.

- User friendly intuitive interface
- Works with any common third-party scanner
- Generate extended Gerber data from stencil scans



### Record Keeping of Stencil Geometries

LPKF StencilCheck verifies geometries by matching vector data from the scan with the intended target data. The software provides well structured documentation for hard copies or electronic filing.

### Recover Lost Data

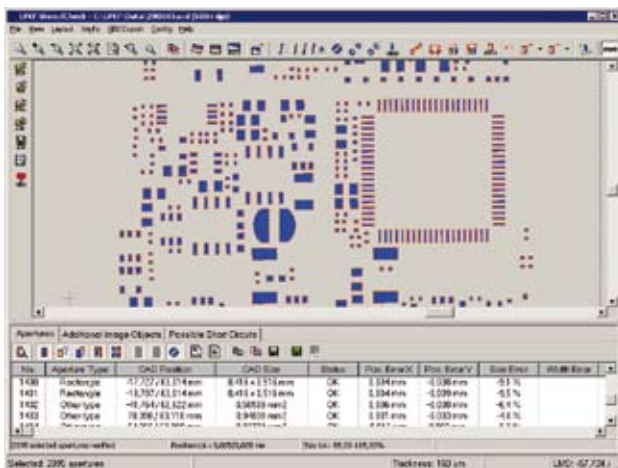
The optional vectorizing-module provides data to reverse engineer stencil production data with a common layout program.

### Statistical Analysis

Optional modules for CP and CPK-data improve statistical analysis.

### PCB Module

The PCB module creates stencil data from the scan of an existing single PCB. This helps to achieve optimum utilization of PCB panels.



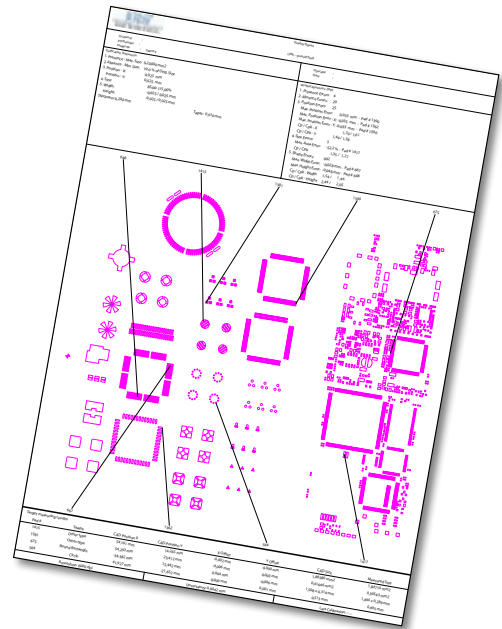
### Connects to Standard Hardware

LPKF StencilCheck works with most PC's, while the software is compatible with most third-party scanners featuring a TWAIN interface. E. g. the EPSON EXPRESSION 10000 XL Scanner (DIN A3 format) is an advisable device, as well as any existing stencil scanner you may already own. LPKF StencilCheck does not include any hardware. LPKF is able to offer the following hardware components upon request: A custom stencil rest and a custom transparency unit.

LPKF StencilCheck calculates cutting data from stencil scans.

**Optional modules for more functions:**

- Statistic-module for CP and CPK analysis
- Export of Gerber data



**Technical Data: LPKF StencilCheck**

<b>Import formats</b>	LMD, GerberX (from CircuitCAM), Tiff, SCD
<b>Export formats</b>	GerberX (option), CSV (report), EMF (report)
<b>Software and hardware requirements</b>	Microsoft Windows 2000 / XP, PC Pentium 2 GHz, 1 GB RAM, screen resolution min. 1024 x 768 pixel, 2 x USB 2.0, 80 GB hard disk

LPKF StencilCheck is a software product. It does not include any hardware components.  
 LPKF can provide the hardware components on request.

**Worldwide** (LPKF Headquarters)

LPKF Laser & Electronics AG Osteriede 7 D-30827 Garbsen Germany  
 Phone +49 (5131) 7095-0 Fax +49 (5131) 7095-90 info@lpkf.de  
 www.lpkf.com

**North America**

LPKF Laser & Electronics North America  
 Phone +1 (800) 345-LPKF Fax +1 (503) 682-71 51 sales@lpkfusa.com  
 www.lpkfusa.com

**China**

LPKF Tianjin Co., Ltd.  
 Phone +86 (22) 2378-5318 Fax +86 (22) 2378-5398 sales@lpkf.cn  
 www.lpkf.cn

LPKF Laser & Electronics AG sells and markets products and provides support in over 50 different countries. Find your nearest partner at [www.lpkf.com](http://www.lpkf.com).

